



User Guide

EVB-ATEK888P5-01

Document Code : 023-674301
Revision No : 01
Revision Date : 24/01/2025

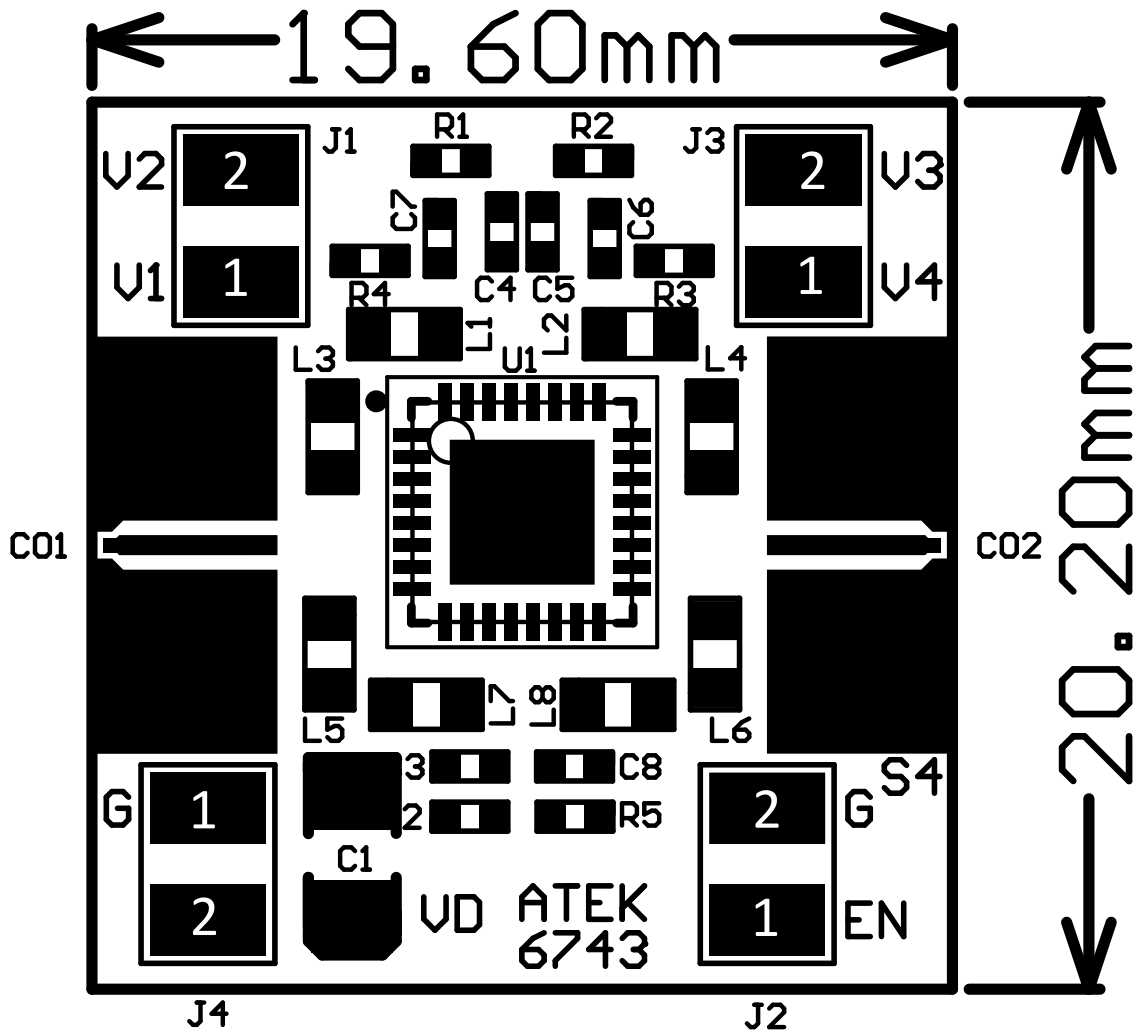
Revisions

Revision No	Revision Date	Revision Reason	Section / Page No
1.0	24.01.2025	Initial Release	

INDEX

1	GENERAL INFORMATION	3
2	DESIGN INFORMATION	4
2.1	SCHEMATIC	4
2.2	BOM	4
3	TYPICAL PERFORMANCE PLOTS.....	5

1 GENERAL INFORMATION



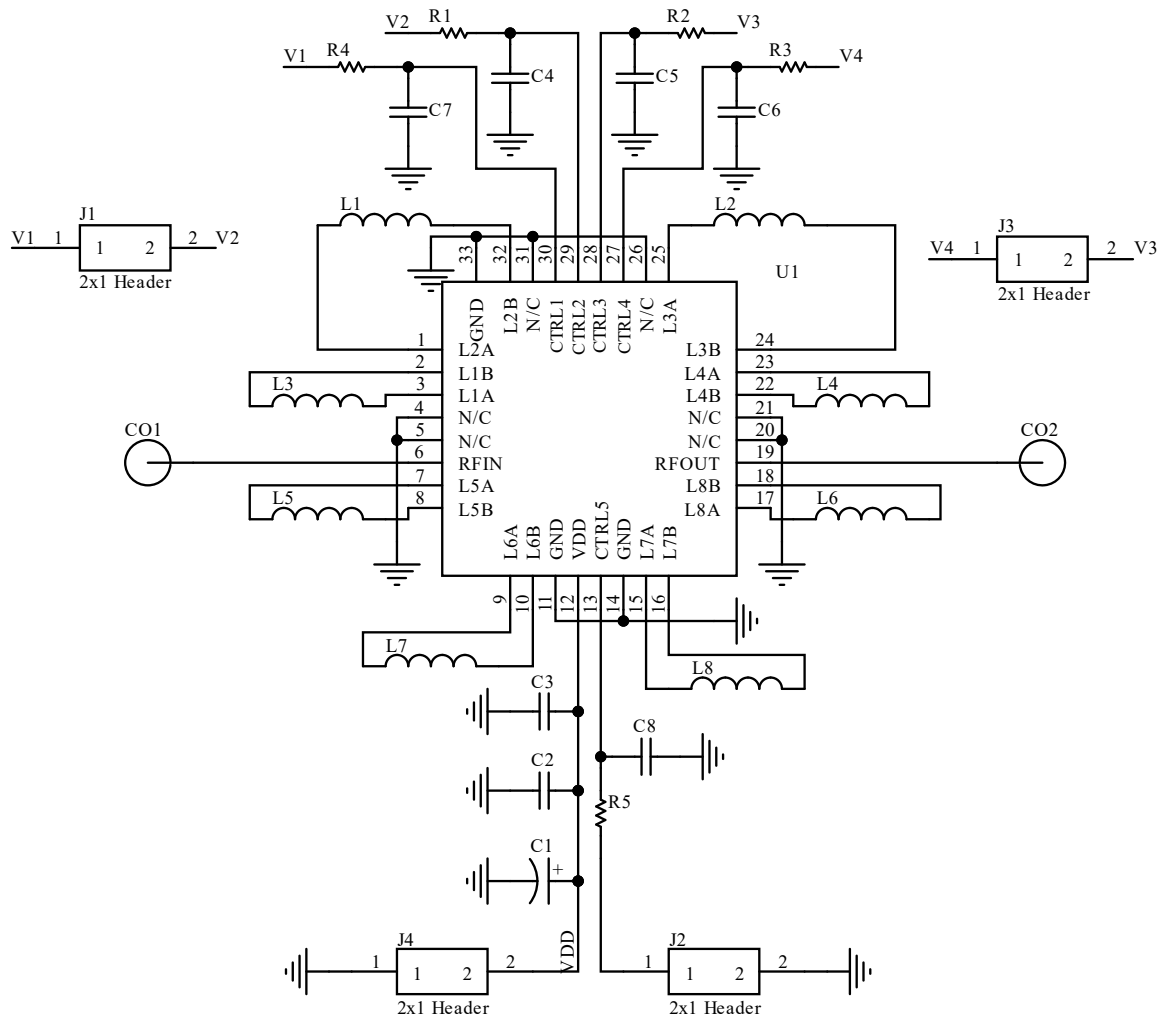
PIN Name	Definition	Comment
CO1	RF IN	SMA Connector
CO2	RF OUT	SMA Connector
J1.1	CTRL1	2.54mm Header
J1.2	CTRL2	2.54mm Header
J2.1	CTRL5	2.54mm Header
J2.2	GND	2.54mm Header
J3.1	CTRL4	2.54mm Header
J3.2	CTRL3	2.54mm Header
J4.1	GND	2.54mm Header
J4.2	VDD	2.54mm Header

Notes:

1. Refer to the datasheet for VDD and Control Voltages details.

2 DESIGN INFORMATION

2.1 SCHEMATIC



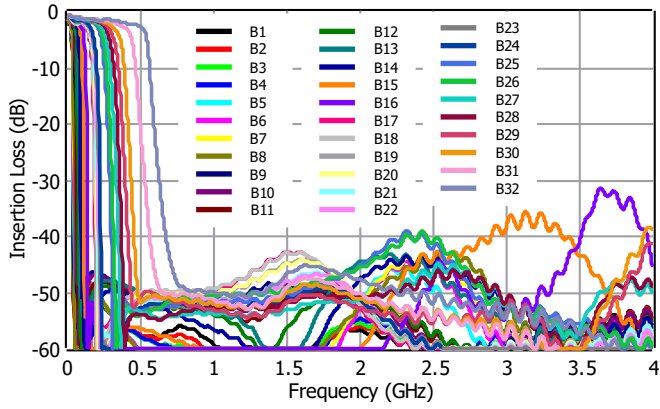
2.2 BOM

Designator	Footprint	Qty	Comment	PN
C1	CASEA	1	2.2uF	
C2	0402	1	10nF	
C3	0402	1	100pF	
C4, C5, C6, C7, C8	0402	5	DNP	
CO1, CO2	SMA Connector	2	SMA Connector	
J1, J2, J3, J4	2x1 Header	4	2x1 Header	
L1, L2	0603	2	82 nH	
L3, L4	0603	2	150 nH	
L5, L6	0603	2	22 nH	
L7, L8	0603	2	27 nH	
R1, R2, R3, R4, R5	0402	5	0R	
U1	ATEKQ5532	1	Tunable BPF	ATEK888P5

3 TYPICAL PERFORMANCE PLOTS

Conditions unless otherwise specified: T = 25 C, CW. For details, please refer to the datasheet.

Insertion Loss



Insertion Loss, Log Scale

