



User Guide

EVB-ATEK884P5-01

Document Code : 023-670201
Revision No : 01
Revision Date : 24/01/2025

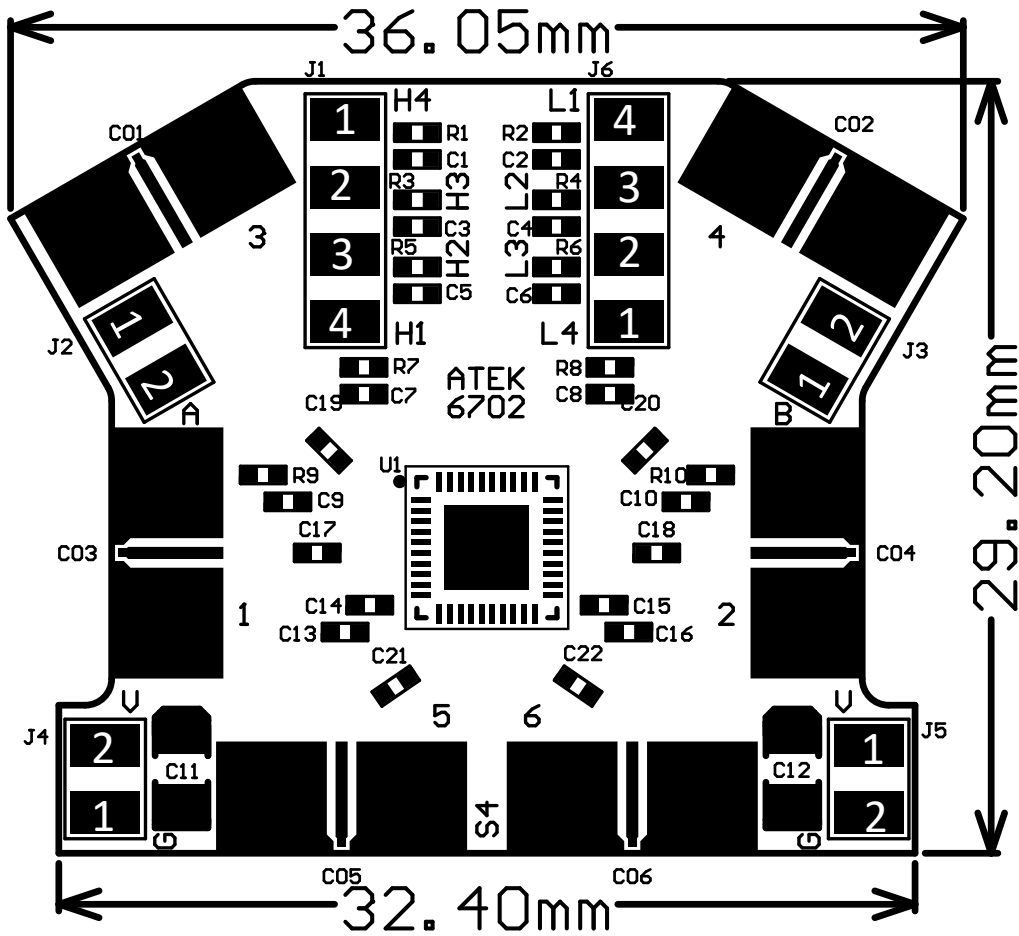
Revisions

Revision No	Revision Date	Revision Reason	Section / Page No
1.0	24.01.2025	Initial Release	

INDEX

1	GENERAL INFORMATION	3
2	DESIGN INFORMATION	4
2.1	SCHEMATIC	4
2.2	BOM	4
3	TYPICAL PERFORMANCE PLOTS.....	5

1 GENERAL INFORMATION



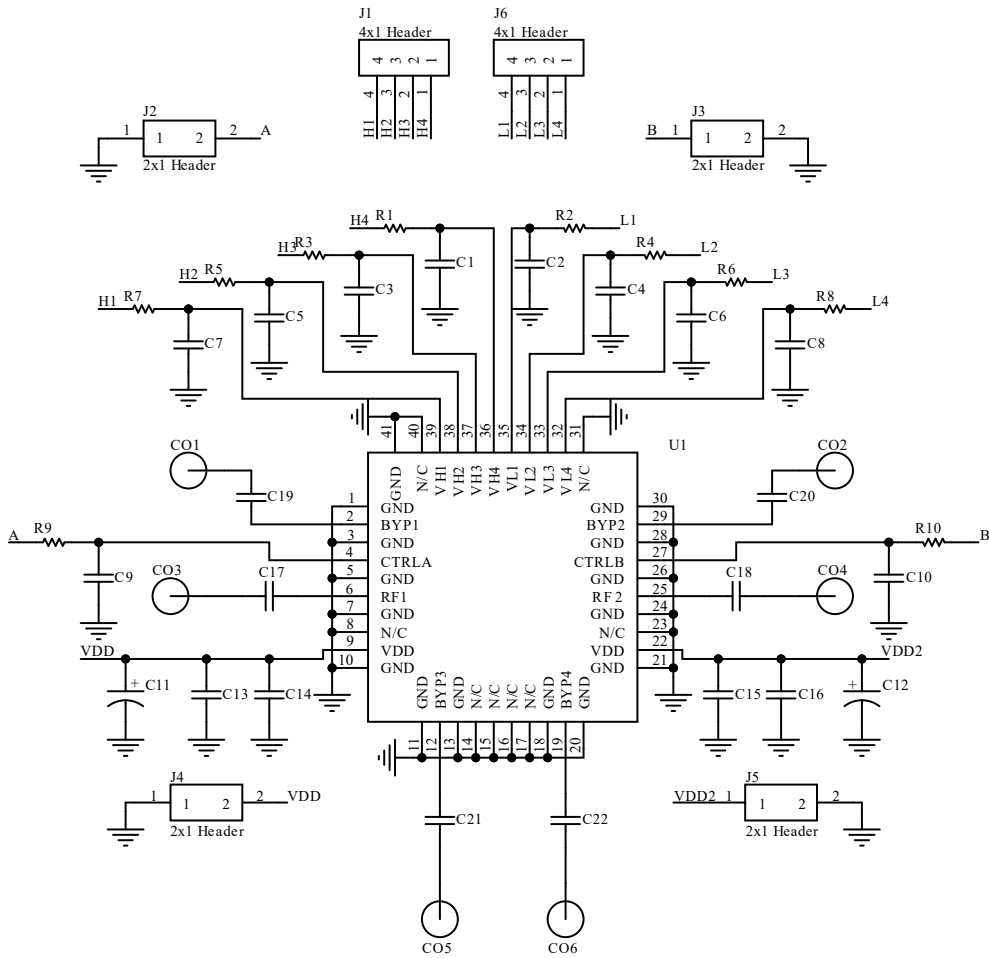
PIN Name	Definition	Comment
C03	RF IN	SMA Connector
C04	RF OUT	SMA Connector
C01	BYP1	SMA Connector
C02	BYP2	SMA Connector
C05	BYP3	SMA Connector
C06	BYP4	SMA Connector
J1.1	VH4	2.54mm Header
J1.2	VH3	2.54mm Header
J1.3	VH2	2.54mm Header
J1.4	VH1	2.54mm Header
J2.2	CTRLA	2.54mm Header
J3.1	CTRLB	2.54mm Header
J4.2	VDD1	2.54mm Header
J5.1	VDD2	2.54mm Header
J6.1	VL4	2.54mm Header
J6.2	VL3	2.54mm Header
J6.3	VL2	2.54mm Header
J6.4	VL1	2.54mm Header
J2.1, J3.2, J4.1, J5.2	GND	2.54mm Header

Notes:

1. Refer to the datasheet for VDD Voltage details.

2 DESIGN INFORMATION

2.1 SCHEMATIC



2.2 BOM

Designator	Footprint	Qty	Comment	PN
C1, C2, C3, C4, C5, C6, C7, C8, C9, C10	0402	10	DNP	
C11, C12	CASEA	2	2.2uF	
C13, C16	0402	2	10nF	
C14, C15	0402	2	100pF	
C17, C18, C19, C20, C21, C22	0402	6	100nF	
CO1, CO2, CO3, CO4, CO5, CO6	SMA Connector	6	SMA Connector	
J1, J6	4x1 Header	2	4x1 Header	
J2, J3, J4, J5	2x1 Header	4	2x1 Header	
R1, R2, R3, R4, R5, R6, R7, R8, R9, R10	0402	10	0R	
U1	ATEKQ6640	1	Tunable BPF	ATEK884P5

3 TYPICAL PERFORMANCE PLOTS

Conditions unless otherwise specified: T = 25 C, CW. For details, please refer to the datasheet.

