



User Guide

EVB-ATEK873N4-01

Document Code : 023-264101
Revision No : 01
Revision Date : 30/07/2024

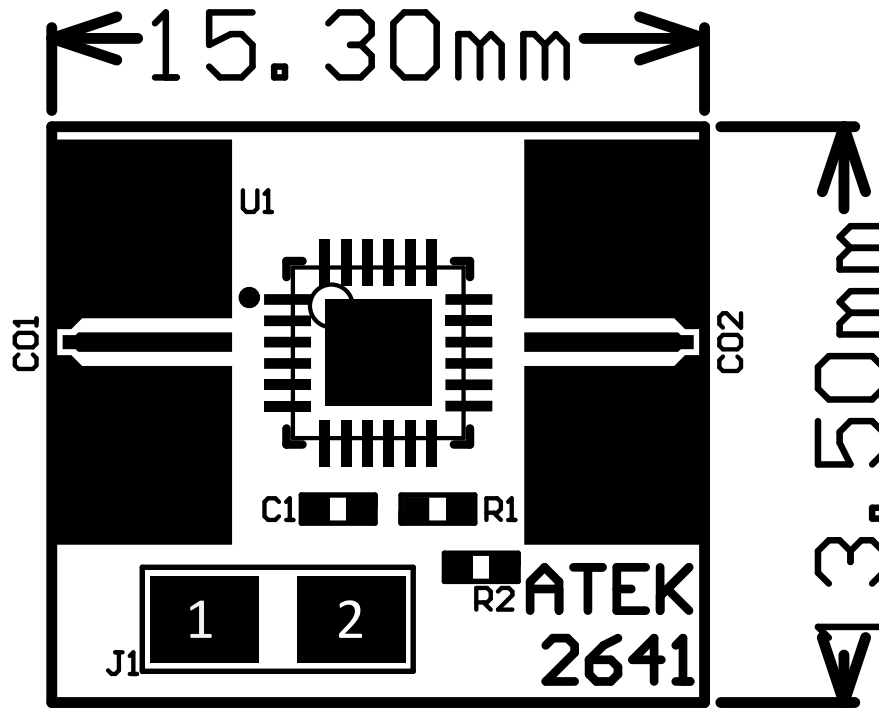
Revisions

| Revision No | Revision Date | Revision Reason | Section / Page No |
|-------------|---------------|-----------------|-------------------|
| 1.0 | 30.07.2024 | Initial Release | |

INDEX

| | | |
|-----|--------------------------------|---|
| 1 | GENERAL INFORMATION | 3 |
| 2 | DESIGN INFORMATION | 4 |
| 2.1 | SCHEMATIC | 4 |
| 2.2 | BOM | 4 |
| 3 | TYPICAL PERFORMANCE PLOTS..... | 5 |

1 GENERAL INFORMATION



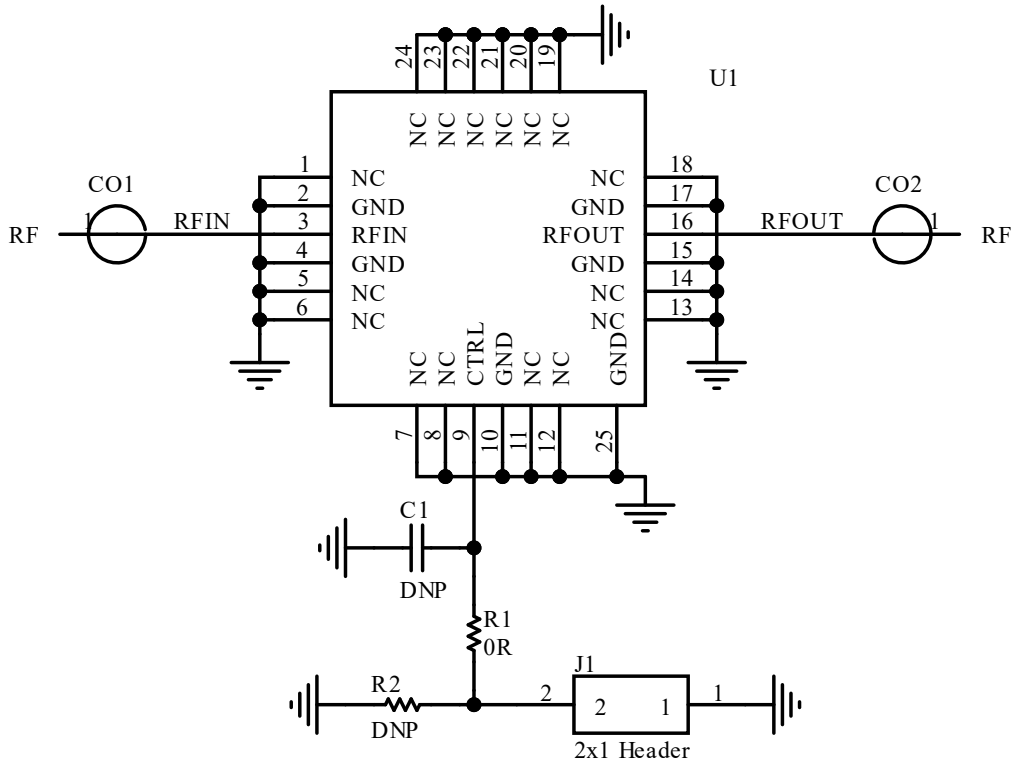
| PIN Name | Definition | Comment |
|----------|------------|---------------|
| CO1 | RF IN | K Connector |
| CO2 | RF OUT | K Connector |
| J1.1 | GND | 2.54mm Header |
| J1.2 | VCTRL | 2.54mm Header |

Notes:

1. Vctrl: 0V to 8V.

2 DESIGN INFORMATION

2.1 SCHEMATIC



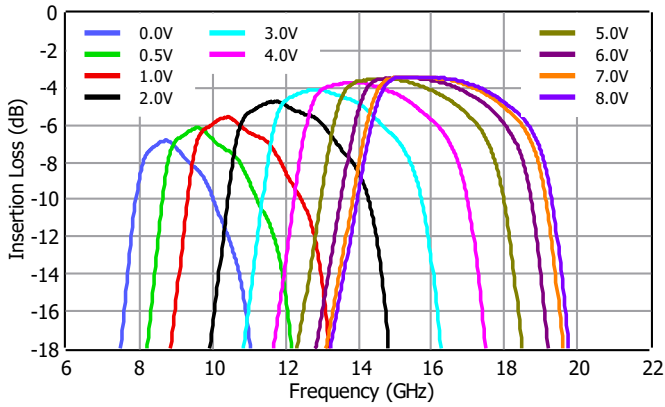
2.2 BOM

| Designator | Footprint | Qty | Comment | PN |
|------------|-------------|-----|-------------|-----------|
| C1 | 0402 | 1 | DNP | |
| CO1, CO2 | K Connector | 2 | ATEK9292 | |
| J1 | 2x1 Header | 1 | 2x1 Header | |
| R1 | 0402 | 1 | 0R | |
| R2 | 0402 | 1 | DNP | |
| U1 | ATEKQ4424 | 1 | Tunable BPF | ATEK873N4 |

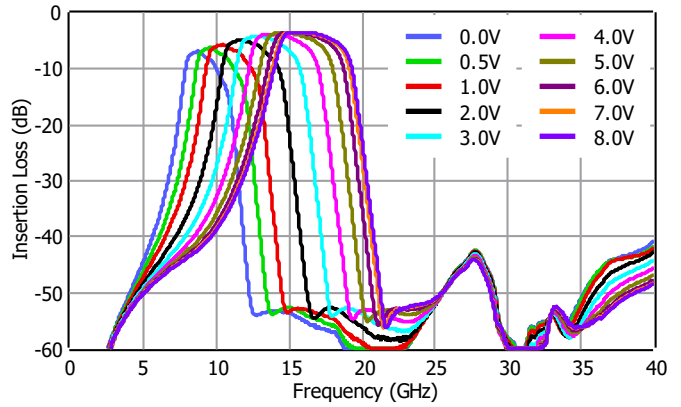
3 TYPICAL PERFORMANCE PLOTS

Conditions unless otherwise specified: $V_{CTRL} = 0$ to 8 V, $T = 25$ C, CW. For details, please refer to the datasheet.

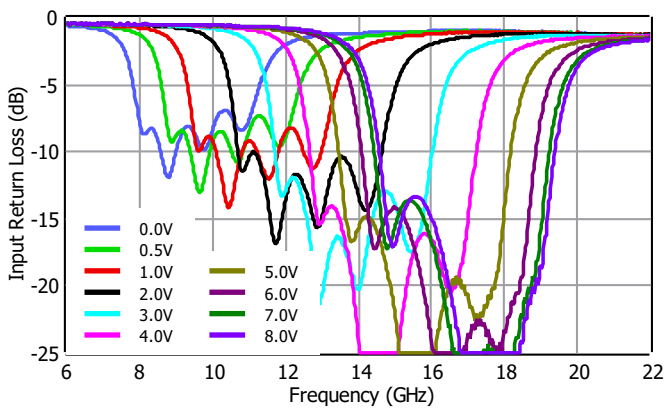
Insertion Loss



Insertion Loss



Input Return Loss



Output Return Loss

