



# User Guide

## EVB-ATEK854P3-01

---

Document Code : 023-447101  
Revision No : 01  
Revision Date : 25/01/2025

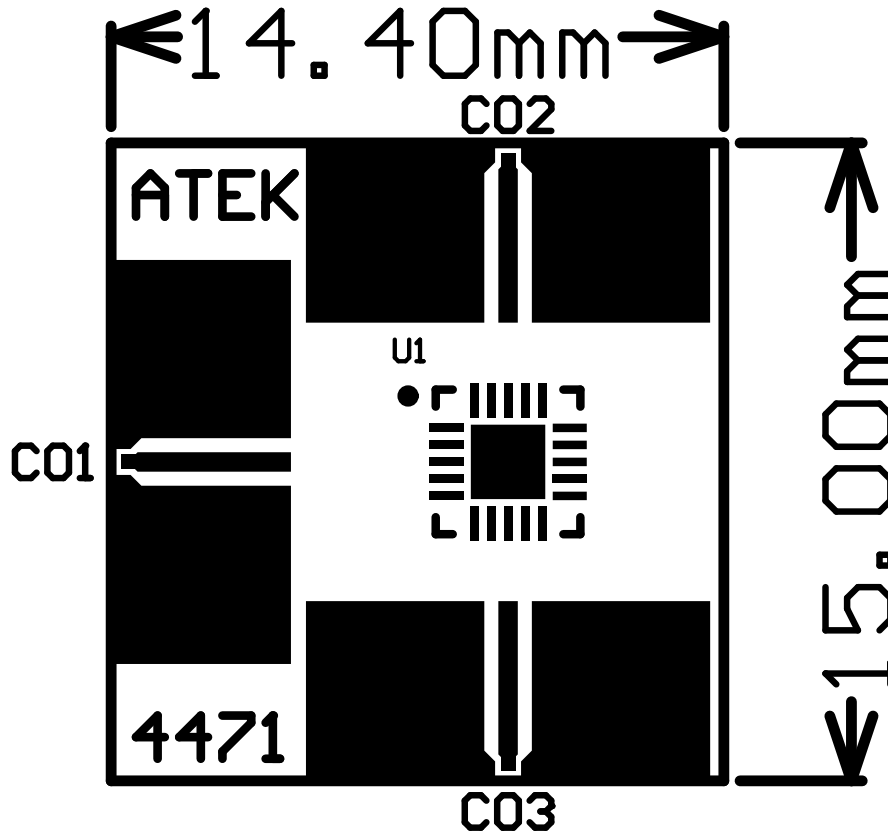
**Revisions**

Revision No	Revision Date	Revision Reason	Section / Page No
1.0	25.01.2025	Initial Release	

**INDEX**

<b>1</b>	<b>GENERAL INFORMATION .....</b>	<b>3</b>
<b>2</b>	<b>DESIGN INFORMATION .....</b>	<b>4</b>
<b>2.1</b>	<b>SCHEMATIC .....</b>	<b>4</b>
<b>2.2</b>	<b>BOM .....</b>	<b>4</b>
<b>3</b>	<b>TYPICAL PERFORMANCE PLOTS.....</b>	<b>5</b>

1 GENERAL INFORMATION



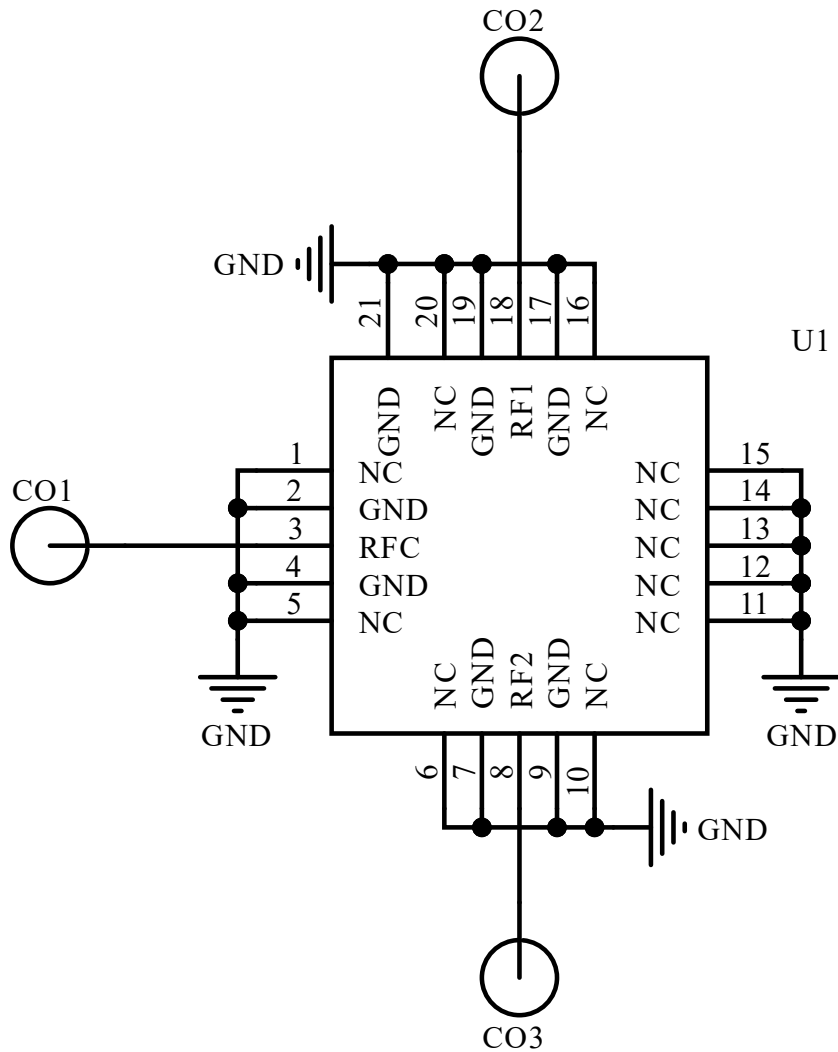
PIN Name	Definition	Comment
<b>CO1</b>	RF IN	K Connector
<b>CO2</b>	RF1	K Connector
<b>CO3</b>	RF2	K Connector

Notes:

1. Refer to the datasheet for details.

2 DESIGN INFORMATION

2.1 SCHEMATIC



2.2 BOM

Designator	Footprint	Qty	Comment	PN
CO1, CO2, CO3	K Connector	3	K Connector	ATEK9292
U1	ATEKQ3320	1	Power Divider	ATEK854P3

3 TYPICAL PERFORMANCE PLOTS

Conditions unless otherwise specified: T = 25 C, CW. For details, please refer to the datasheet.

Insertion Loss

