



# User Guide

## EVB-ATEK569P5-01

---

Document Code : 023-516101  
Revision No : 01  
Revision Date : 28/11/2024

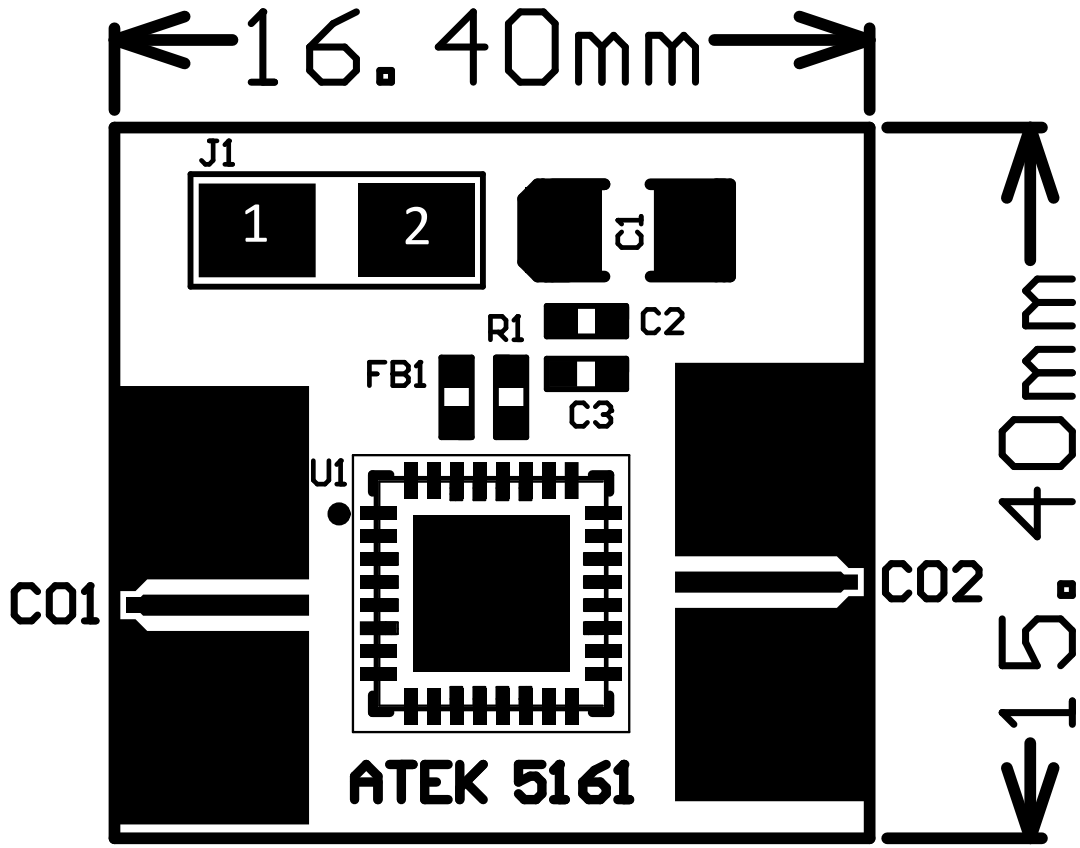
**Revisions**

Revision No	Revision Date	Revision Reason	Section / Page No
1.0	28.11.2024	Initial Release	

**INDEX**

<b>1</b>	<b>GENERAL INFORMATION .....</b>	<b>3</b>
<b>2</b>	<b>DESIGN INFORMATION .....</b>	<b>4</b>
<b>2.1</b>	<b>SCHEMATIC .....</b>	<b>4</b>
<b>2.2</b>	<b>BOM .....</b>	<b>4</b>
<b>3</b>	<b>TYPICAL PERFORMANCE PLOTS.....</b>	<b>5</b>

1 GENERAL INFORMATION



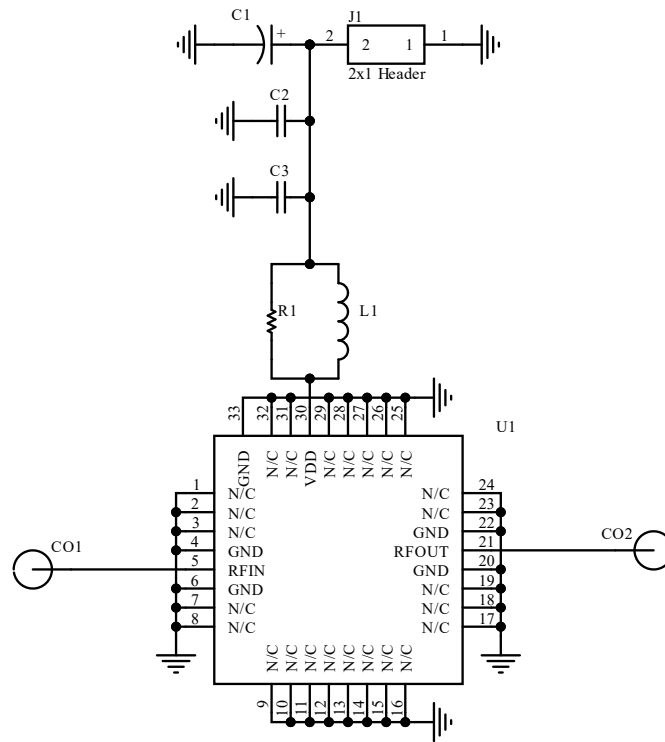
PIN Name	Definition	Comment
CO1	RF IN	K Connector
CO2	RF OUT	K Connector
J1.1	GND	2.54mm Header
J1.2	VDD	2.54mm Header

Notes:

1. Refer to the datasheet for VDD Voltage details.

2 DESIGN INFORMATION

2.1 SCHEMATIC



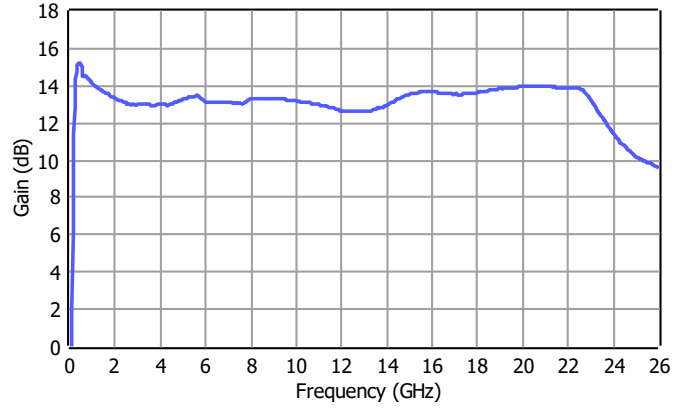
2.2 BOM

Designator	Footprint	Qty	Comment	PN
C1	CASEA	1	2.2uF	
C2	0402	1	10nF	
C3	0402	1	100pF	
CO1, CO2	K Connector	2	K Connector	ATEK9292
L1	0402	1	18nH	LQW18AN18NG80D
J1	2x1 Header	1	2x1 Header	
R1	0402	1	68R	ERJ-PA2F68R0X
U1	ATEKQ5532	1	Amplifier	ATEK569P5

3 TYPICAL PERFORMANCE PLOTS

Conditions unless otherwise specified:  $V_{DD} = 12\text{ V}$ ,  $T = 25\text{ C}$ , CW. For details, please refer to the datasheet.

Gain



Psat

