



User Guide

EVB-ATEK564AN3-01

Document Code : 023-571101
Revision No : 02
Revision Date : 04/02/2025

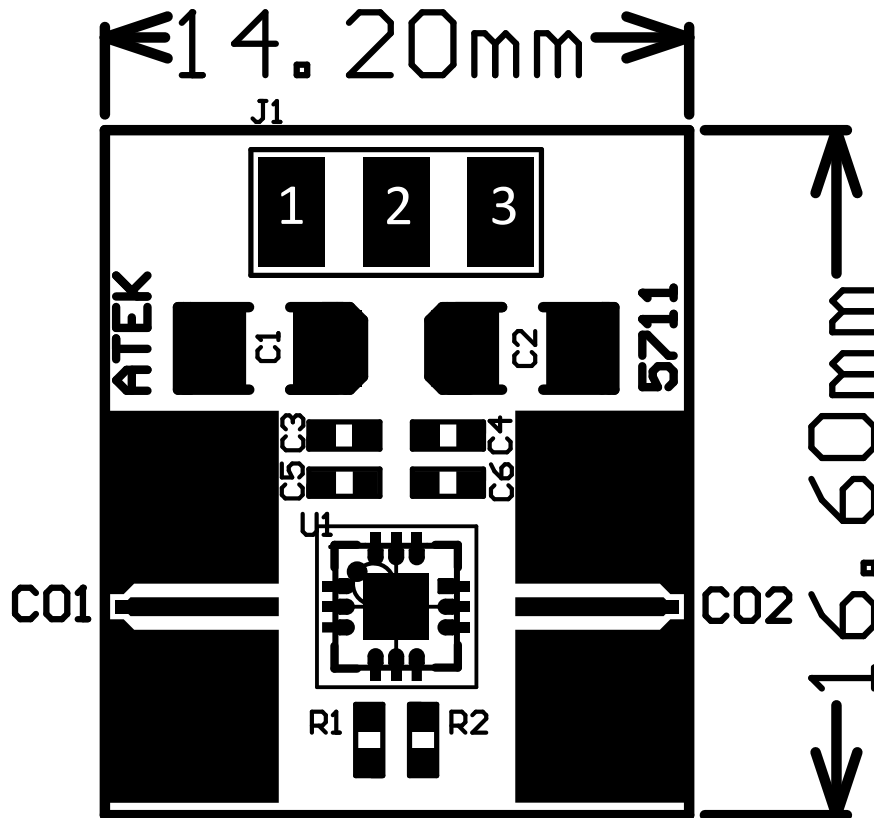
Revisions

Revision No	Revision Date	Revision Reason	Section / Page No
1.0	24.01.2025	Initial Release	
2.0	04.02.2025	Plots Added	

INDEX

1	GENERAL INFORMATION	3
2	DESIGN INFORMATION.....	4
2.1	SCHEMATIC	4
2.2	BOM	4
3	TYPICAL PERFORMANCE PLOTS.....	5

1 GENERAL INFORMATION



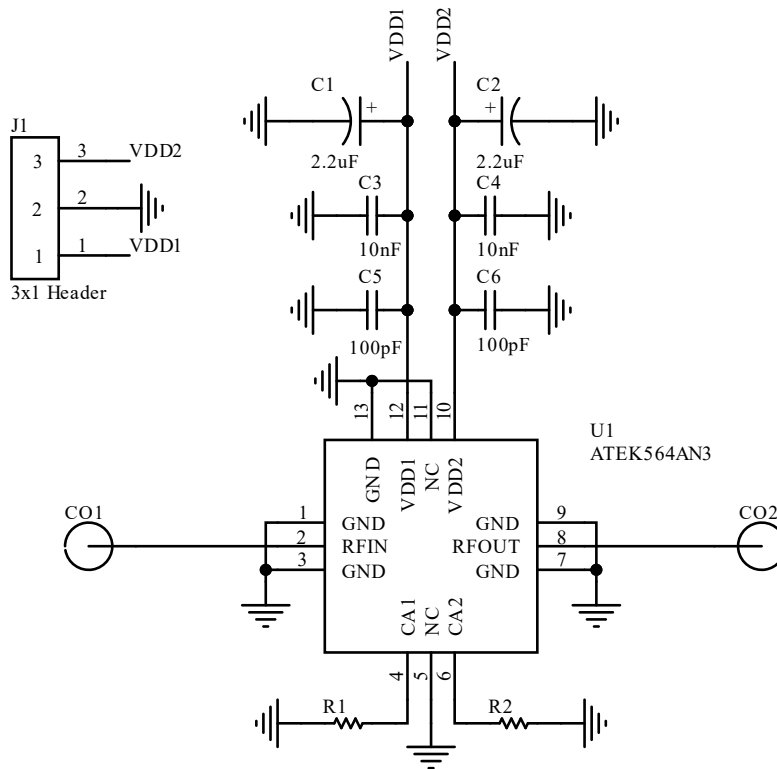
PIN Name	Definition	Comment
CO1	RF IN	K Connector
CO2	RF OUT	K Connector
J1.1	VDD1	2.54mm Header
J1.2	GND	2.54mm Header
J1.3	VDD2	2.54mm Header

Notes:

1. Refer to the datasheet for VDD Voltage details.

2 DESIGN INFORMATION

2.1 SCHEMATIC



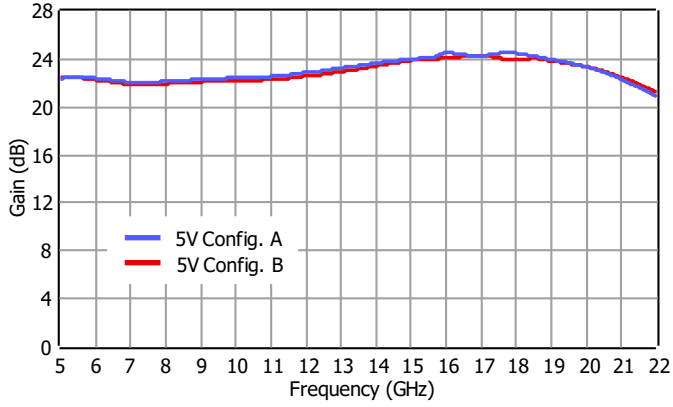
2.2 BOM

Designator	Footprint	Qty	Comment	PN
C1, C2	CASEA	2	2.2uF	
C3, C4	0402	2	10nF	
C5, C6	0402	2	100pF	
CO1, CO2	K Connector	2	K Connector	ATEK9292
J1	3x1 Header	1	3x1 Header	
R1, R2	0402	2	DNP for Configuration A OR for Configuration B	
U1	ATEKQ3312	1	Driver Amplifier	ATEK564AN3

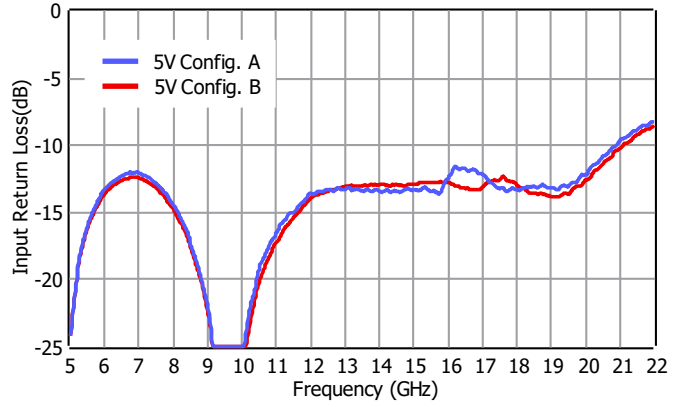
3 TYPICAL PERFORMANCE PLOTS

Conditions unless otherwise specified: $V_{DD} = 5\text{ V}$, $T = 25\text{ C}$, CW. For details, please refer to the datasheet.

Gain



Input Return Loss



Output Return Loss

