



# User Guide

## EVB-ATEK367P4-01

---

Document Code : 023-135201  
Revision No : 01  
Revision Date : 06/03/2024

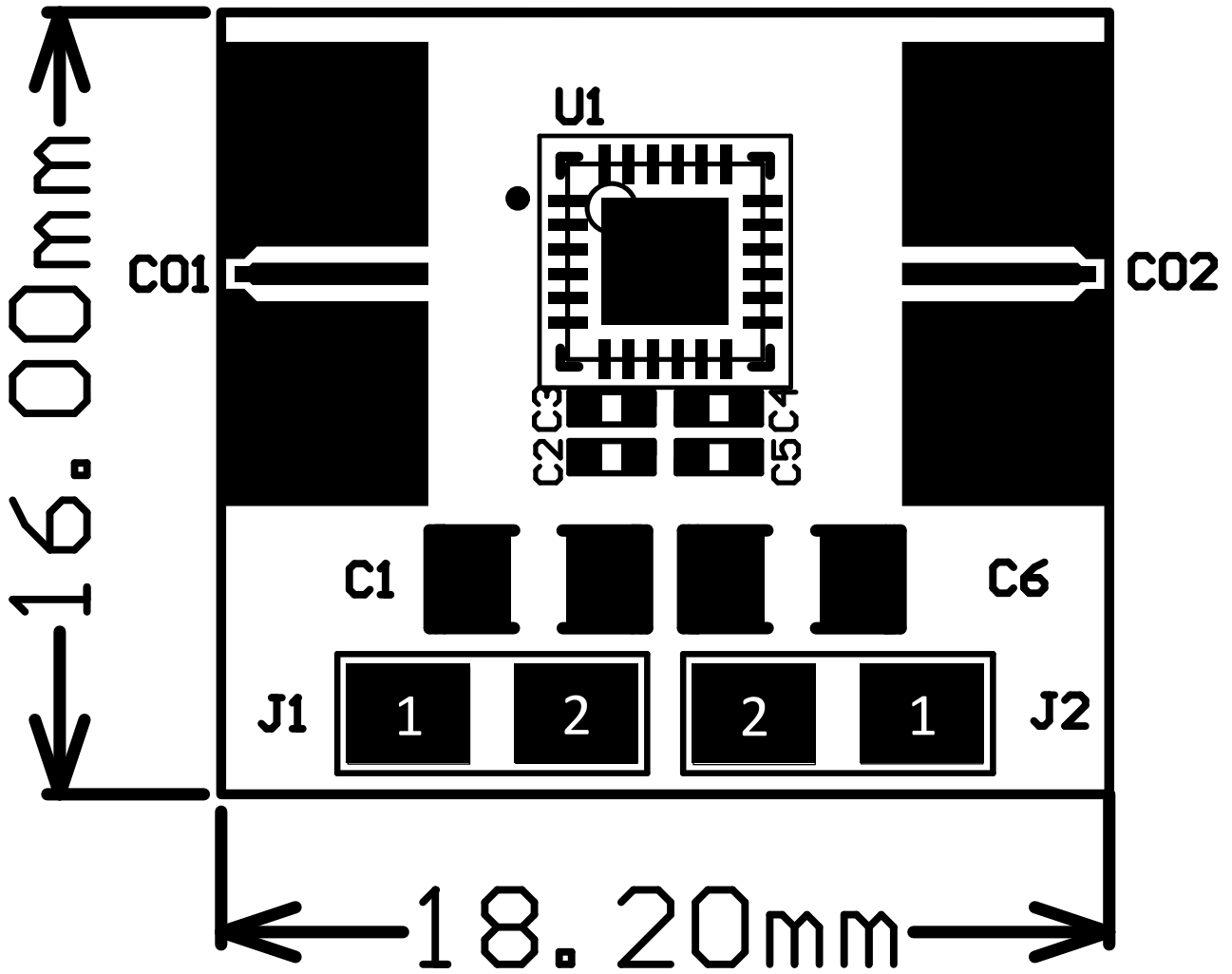
**Revisions**

Revision No	Revision Date	Revision Reason	Section / Page No
1.0	06.03.2024	Initial Release	

**INDEX**

1	GENERAL INFORMATION .....	3
2	DESIGN INFORMATION .....	4
2.1	SCHEMATIC .....	4
2.2	BOM .....	4
3	TYPICAL PERFORMANCE PLOTS.....	5

1 GENERAL INFORMATION



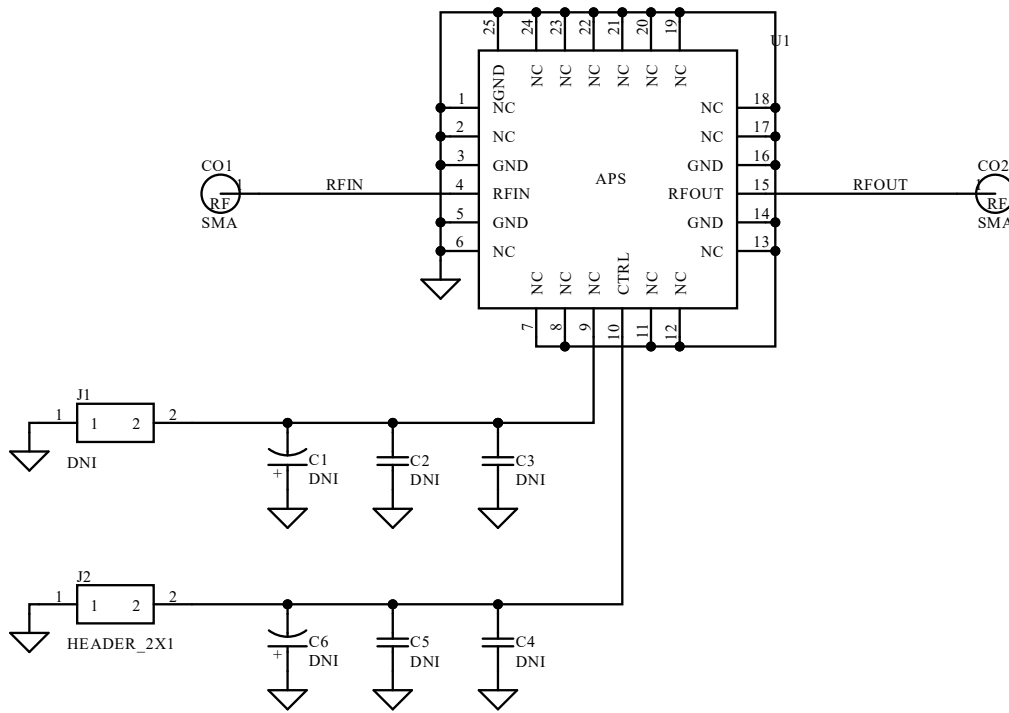
PIN Name	Definition	Comment
CO1	RF IN	SMA Connector
CO2	RF OUT	SMA Connector
J1.1	N/A	2.54mm Header
J1.2	N/A	2.54mm Header
J2.1	GND	2.54mm Header
J2.2	Control Voltage	2.54mm Header

Notes:

1. Refer to the datasheet for Control Voltage detail.

2 DESIGN INFORMATION

2.1 SCHEMATIC



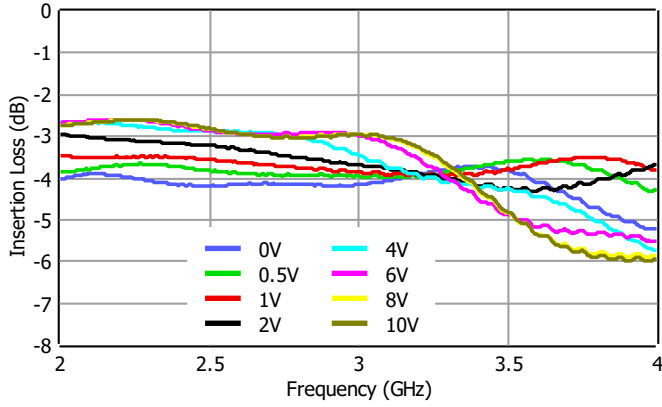
2.2 BOM

Designator	Footprint	Qty	Comment	PN
<b>C1, C6</b>	CASEA	2	DNP	
<b>C2, C5</b>	0402	2	DNP	
<b>C3, C4</b>	0402	2	DNP	
<b>CO1, CO2</b>	SMA Connector	2	SMA Connector	
<b>J1</b>	2x1 Header	1	DNP	
<b>J2</b>	2x1 Header	1	2x1 Header	
<b>U1</b>	ATEKQ4424	1	APS	ATEK367P4

3 TYPICAL PERFORMANCE PLOTS

Conditions unless otherwise specified: T = 25 C, CW. For details, please refer to the datasheet.

Insertion Loss



Normalized Phase Shift

