



User Guide

EVB-ATEK350AP4-01

Document Code : 023-135201
Revision No : 01
Revision Date : 25/11/2024

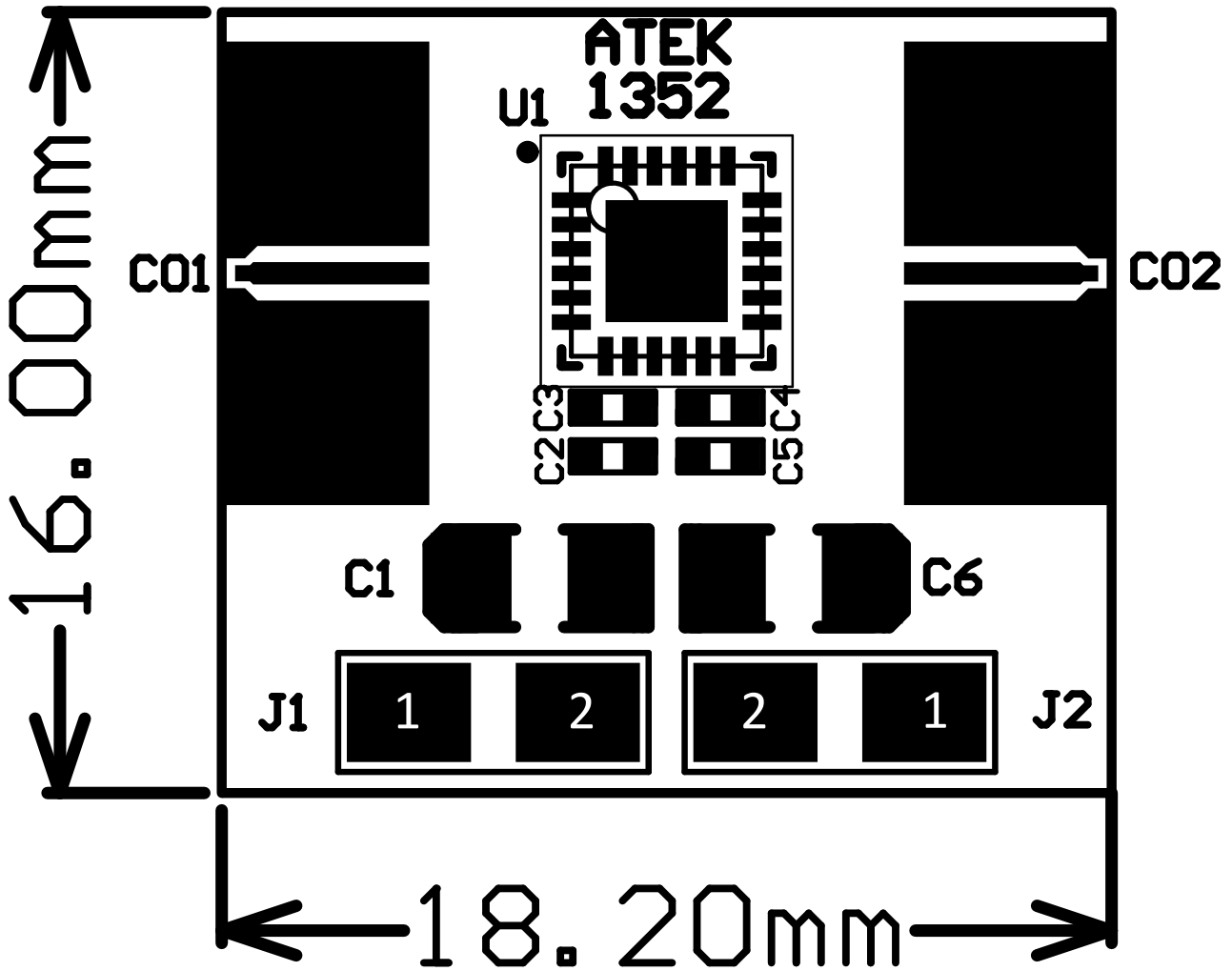
Revisions

Revision No	Revision Date	Revision Reason	Section / Page No
1.0	25.11.2024	Initial Release	

INDEX

1	GENERAL INFORMATION	3
2	DESIGN INFORMATION	4
2.1	SCHEMATIC	4
2.2	BOM	4
3	TYPICAL PERFORMANCE PLOTS.....	5

1 GENERAL INFORMATION



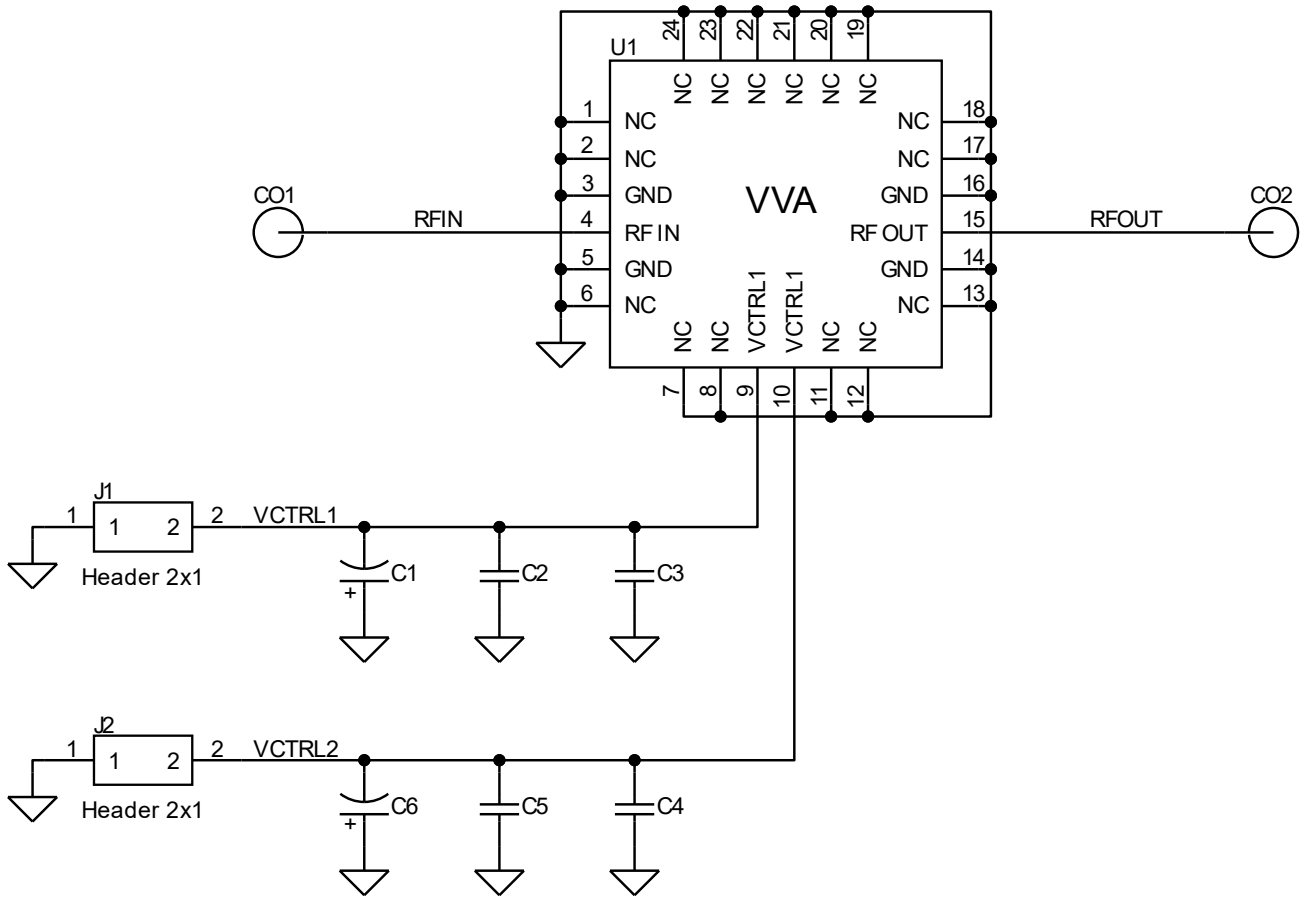
PIN Name	Definition	Comment
CO1	RF IN	K Connector
CO2	RF OUT	K Connector
J1.1, J2.1	GND	2.54mm Header
J1.2	Vctrl1	2.54mm Header
J2.2	Vctrl2	2.54mm Header

Notes:

1. Refer to the datasheet for Vctrl Voltage details.

2 DESIGN INFORMATION

2.1 SCHEMATIC



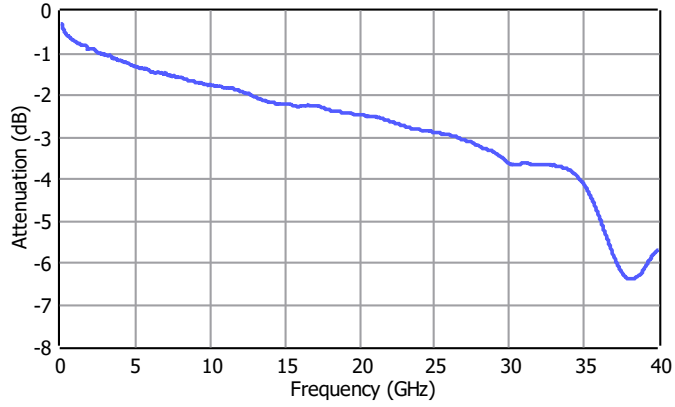
2.2 BOM

Designator	Footprint	Qty	Comment	PN
C1, C6	CASEA	2	DNP	
C2, C5	0402	2	10nF	
C3, C4	0402	2	100pF	
CO1, CO2	K Connector	2	K Connector	ATEK9292
J1, J2	2x1 Header	2	2x1 Header	
U1	ATEKQ4424	1	VVA	ATEK350AP4

3 TYPICAL PERFORMANCE PLOTS

Conditions unless otherwise specified: $V_{CTRL} = 0$ to -3 V, $T = 25$ C, CW. For details, please refer to the datasheet.

Insertion Loss



Attenuation States

