



User Guide

EVB-ATEK256P3-01

Document Code : 023-101301
Revision No : 03
Revision Date : 25/07/2023

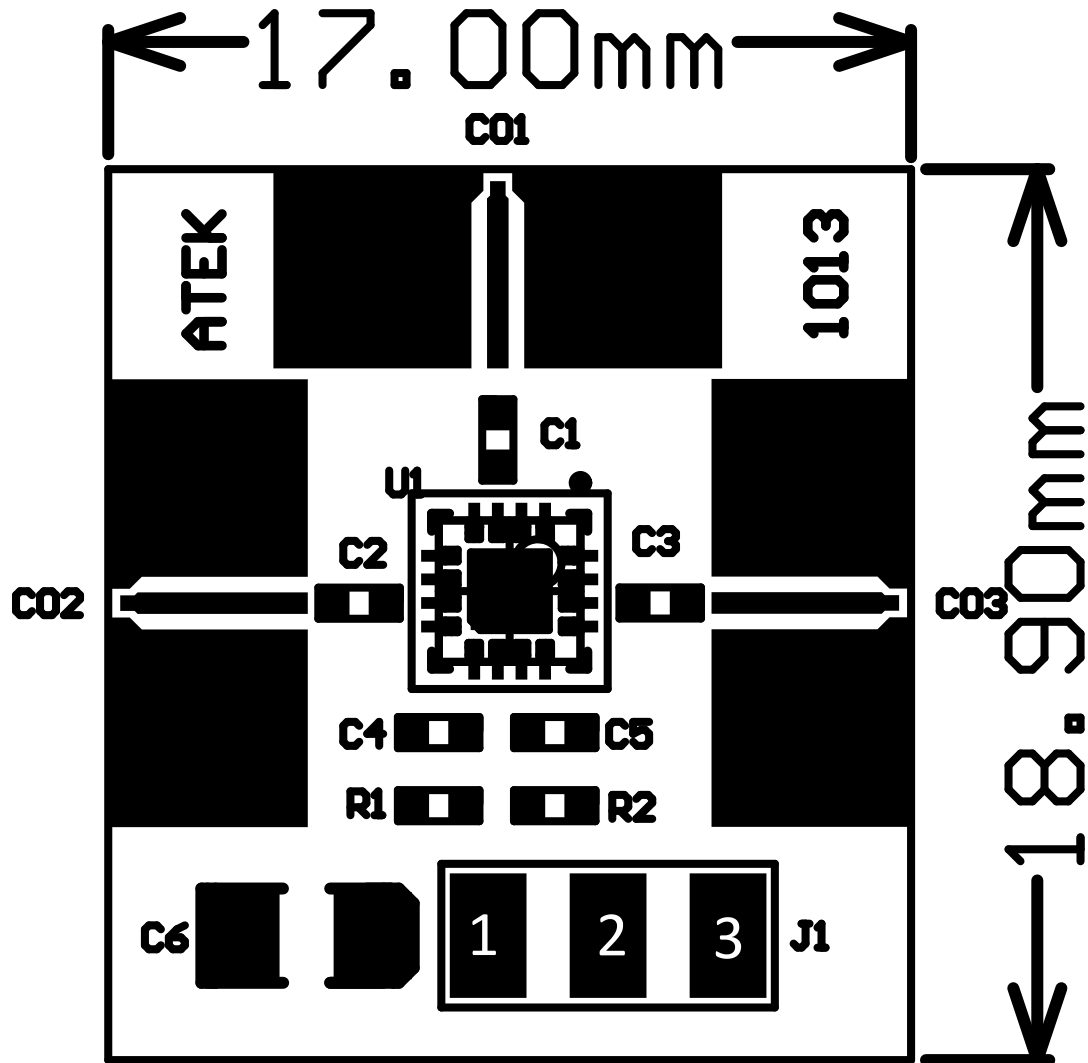
Revisions

Revision No	Revision Date	Revision Reason	Section / Page No
1.0	29.06.2022	Initial Release	
1.1	06.03.2023	Content Fixed	
1.2	25.07.2023	Pin Definition Revised	

INDEX

1	GENERAL INFORMATION	3
2	DESIGN INFORMATION.....	4
2.1	SCHEMATIC.....	4
2.2	BOM	4
3	TYPICAL PERFORMANCE PLOTS.....	5

1 GENERAL INFORMATION



PIN Name	Definition	Comment
CO1	RF IN	SMA Connector
CO2, CO3	RF OUT	SMA Connector
J1.1	VDD	2.54mm Header
J1.2	CTRL	2.54mm Header
J1.3	GND	2.54mm Header

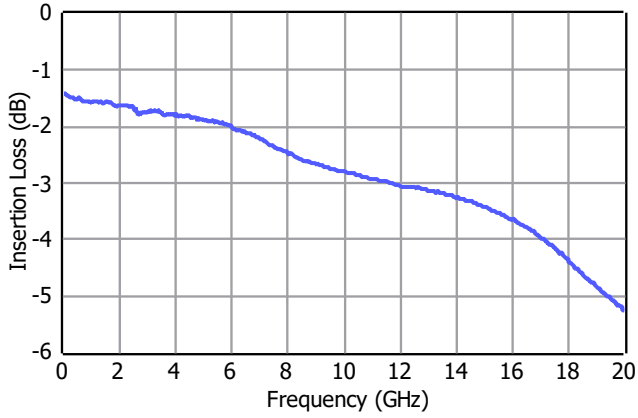
Notes:

1. Refer to the datasheet for VDD and Control Voltage details.

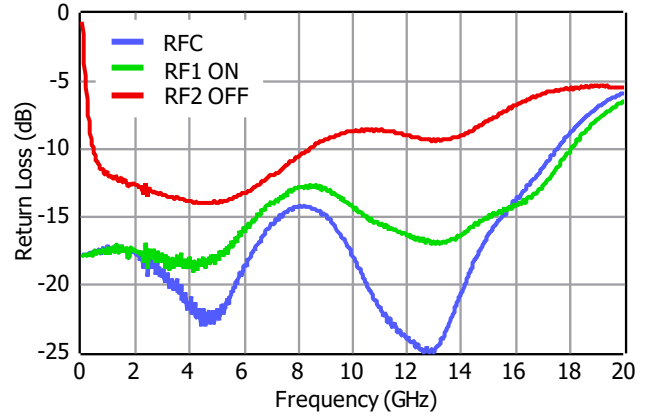
3 TYPICAL PERFORMANCE PLOTS

Conditions unless otherwise specified: $V_{CTRL} = 0/5\text{ V}$, $T = 25\text{ C}$, CW. For details, please refer to the datasheet.

Insertion Loss



Return Loss



Isolation

