



User Guide

EVB-ATEK169P3-01

Document Code : 023-624201
Revision No : 01
Revision Date : 28/11/2024

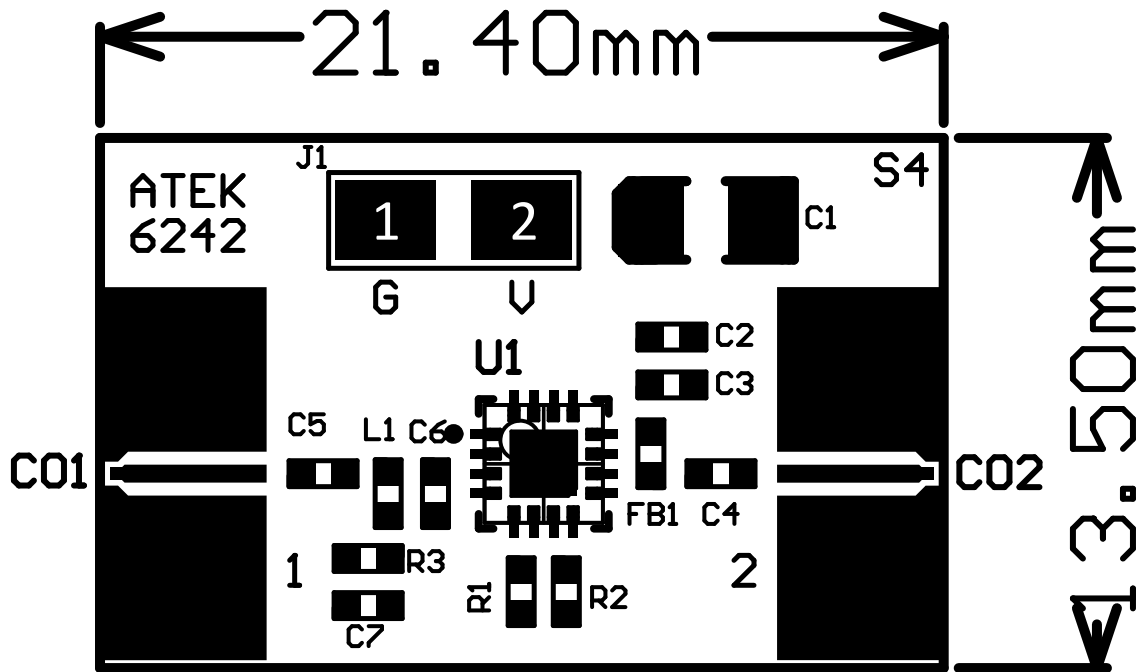
Revisions

Revision No	Revision Date	Revision Reason	Section / Page No
1.0	28.11.2024	Initial Release	

INDEX

1	GENERAL INFORMATION	3
2	DESIGN INFORMATION	4
2.1	SCHEMATIC	4
2.2	BOM	4
3	TYPICAL PERFORMANCE PLOTS.....	5

1 GENERAL INFORMATION



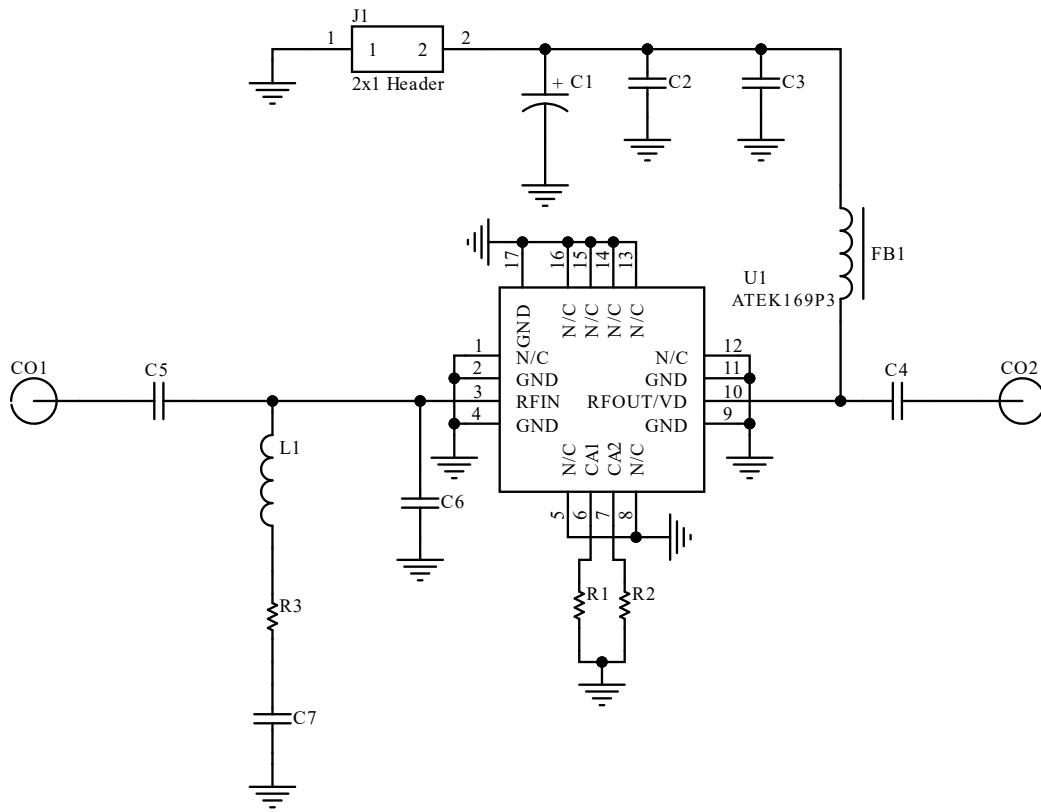
PIN Name	Definition	Comment
CO1	RF IN	SMA Connector
CO2	RF OUT	SMA Connector
J1.1	GND	2.54mm Header
J1.2	VDD	2.54mm Header

Notes:

1. Refer to the datasheet for VDD Voltage details.

2 DESIGN INFORMATION

2.1 SCHEMATIC



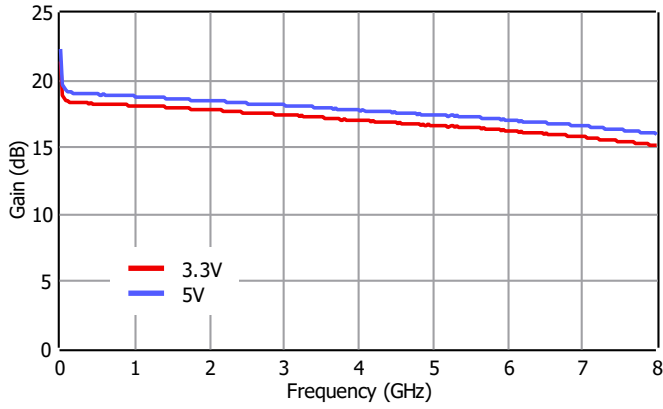
2.2 BOM

Designator	Footprint	Qty	Comment	PN
C1	CASEA	1	2.2uF	
C2	0402	1	10nF	
C3	0402	1	100pF	
C4, C5	0402	2	100nF	
C6	0402	1	DNP	
C7	0402	1	DNP	
CO1, CO2	SMA Connector	2	SMA Connector	
FB1	0402	1	Ferrite Bead	
J1	2x1 Header	1	2x1 Header	
L1	0402	1	DNP	
R1, R2	0402	2	R1: 50R, R2: 0R for Low Current Configuration R1: DNP, R2: 0R for Nominal Current Configuration R1: DNP, R2: 10R for High Linearity Configuration	
R3	0402	1	DNP	
U1	ATEKQ3316	1	LNA	ATEK169P3

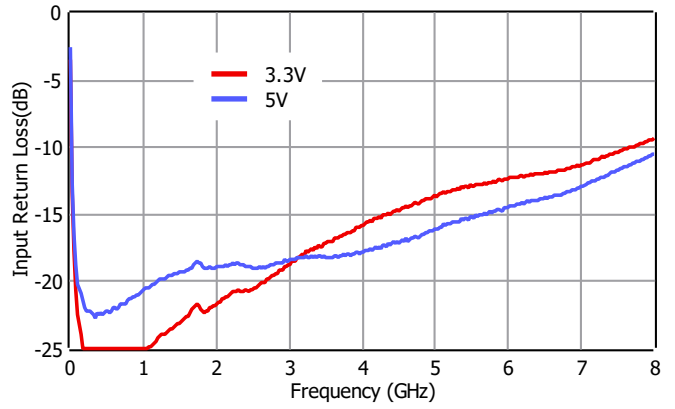
3 TYPICAL PERFORMANCE PLOTS

Conditions unless otherwise specified: $V_{DD} = 5\text{ V}$, $T = 25\text{ C}$, CW. For details, please refer to the datasheet.

Gain



Input Return Loss



Output Return Loss

