



User Guide

EVB-ATEK161P5-01

Document Code : 023-517101
Revision No : 01
Revision Date : 29/04/2024

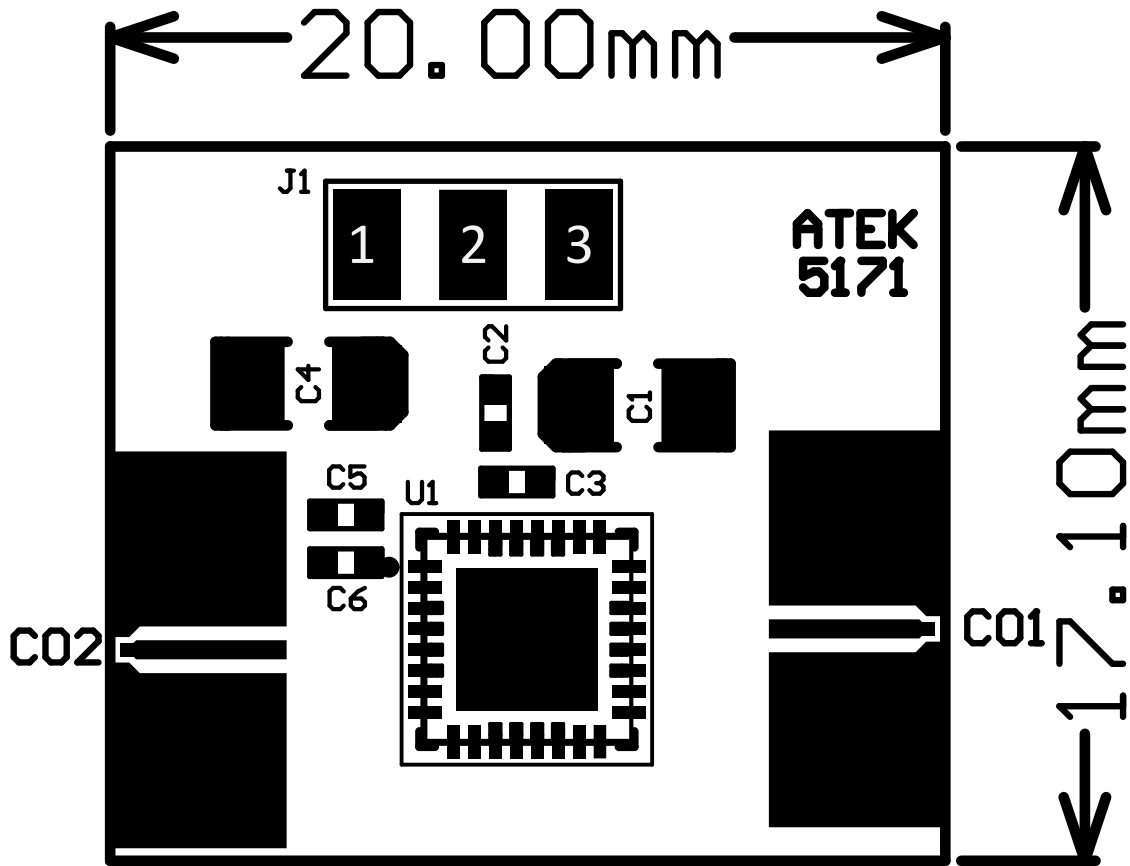
Revisions

Revision No	Revision Date	Revision Reason	Section / Page No
1.0	29.04.2024	Initial Release	

INDEX

1	GENERAL INFORMATION	3
2	DESIGN INFORMATION	4
2.1	SCHEMATIC	4
2.2	BOM	4
3	TYPICAL PERFORMANCE PLOTS.....	5

1 GENERAL INFORMATION



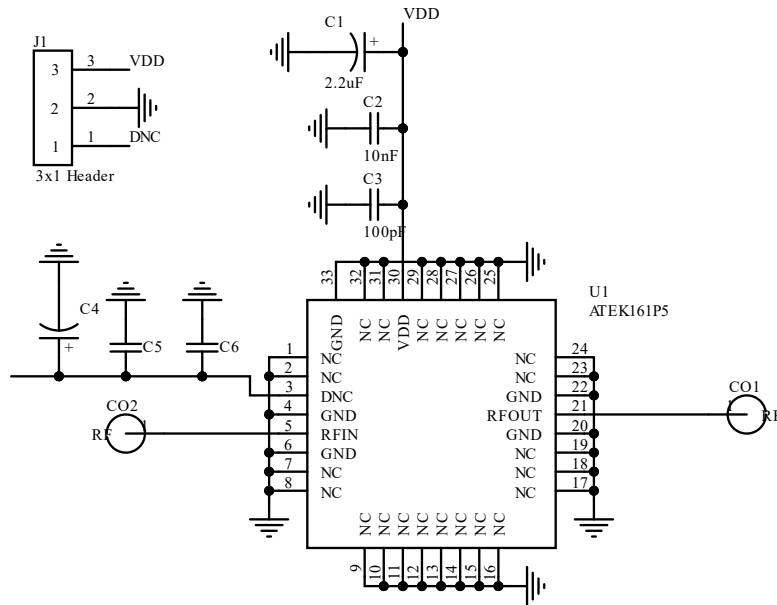
PIN Name	Definition	Comment
CO1	RF IN	K Connector
CO2	RF OUT	K Connector
J1.1	DNC	2.54mm Header
J1.2	GND	2.54mm Header
J1.3	VDD	2.54mm Header

Notes:

1. Refer to the datasheet for VDD Voltage details.

2 DESIGN INFORMATION

2.1 SCHEMATIC



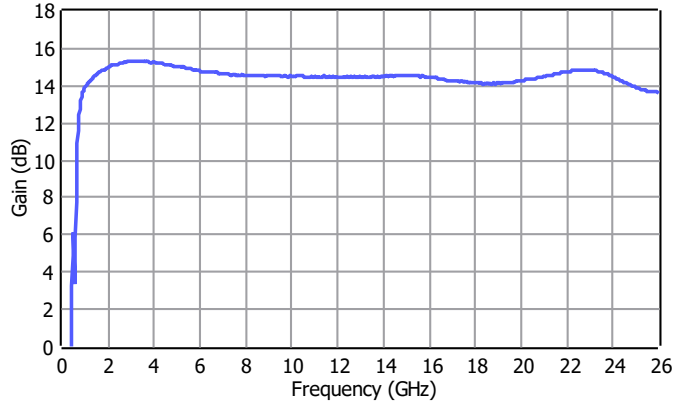
2.2 BOM

Designator	Footprint	Qty	Comment	PN
C1	CASEA	1	2.2uF	
C2	0402	1	10nF	
C3	0402	1	100pF	
C4	CASEA	1	DNP	
C5, C6	0402	2	DNP	
CO1, CO2	K Connector	2	K Connector	ATEK9292
J1	3x1 Header	1	3x1 Header	
U1	ATEKQ5532	1	LNA	ATEK161P5

3 TYPICAL PERFORMANCE PLOTS

Conditions unless otherwise specified: $V_{DD} = 5\text{ V}$, $T = 25\text{ C}$, CW. For details, please refer to the datasheet.

Gain



Return Loss

